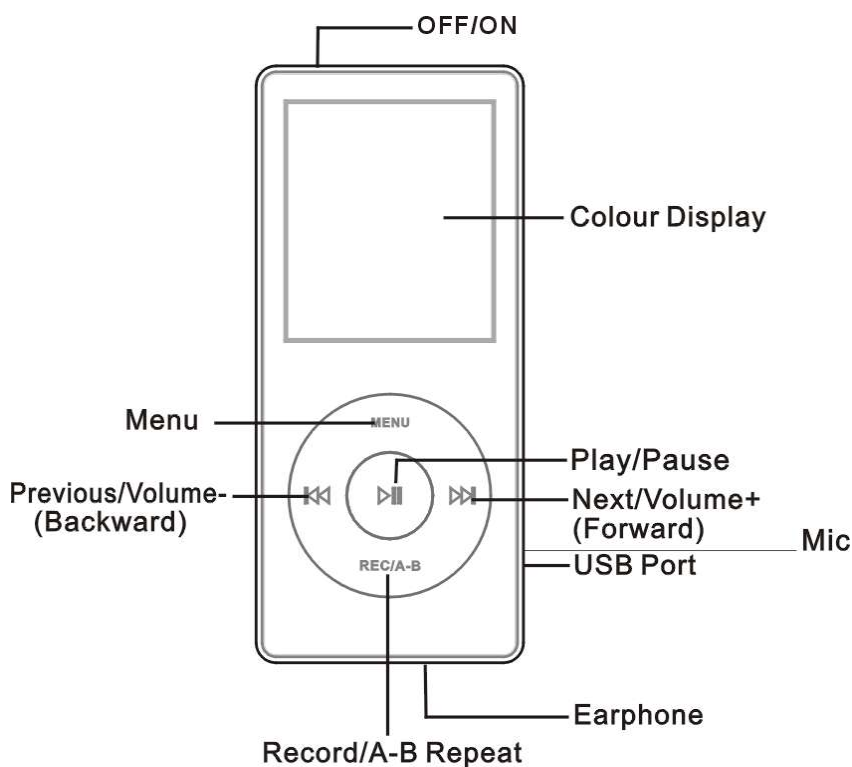


Contents	
Features-----	2
Technical specification-----	2
Notice-----	2
Part name-----	3
LCD display -----	3
Key function details -----	3
Manual function details -----	4
Charging-----	7
USB connection -----	7
Convert video file into SMV format -----	8
Transfer file and format -----	8
Trouble shooting-----	9
Caution-----	9



## Features


- Support MP3, WMA, ASF, WAV format music
- View JPEG format picture
- Image folder function
- USB storage, for above WIN98, plug & play by cable
- Built in MIC, recording time more than 10 hours
- Save energy mode, auto off set
- Various EQ, repeat modes
- Support multi-languages OSD (English/Spanish/French)
- Support Win98SE/ME, Win2000, Win XP system

- USB full speed USB 2.0

## Technical specification

Music format	MP3, WMA, WAV
Video format	SMV
Picture format	JPG,BMP, support multi picture viewed function
Storage capacity	256MB/512MB/1GB/2GB
display	1.8" color display 128*160 matrix
SNR	85dB
Record mode	MIC external record
Record format/time	<b>WAV 20 hours for 256MB</b>
Out put frequency range	20HZ-22KHZ
Support OSD language	English, Spanish, French
size	90*40*8 mm
Battery specification	3.6V rechargeable lithium battery
PC slot	USB2.0
System requirement	Win98SE/ME, Win2000, Win XP

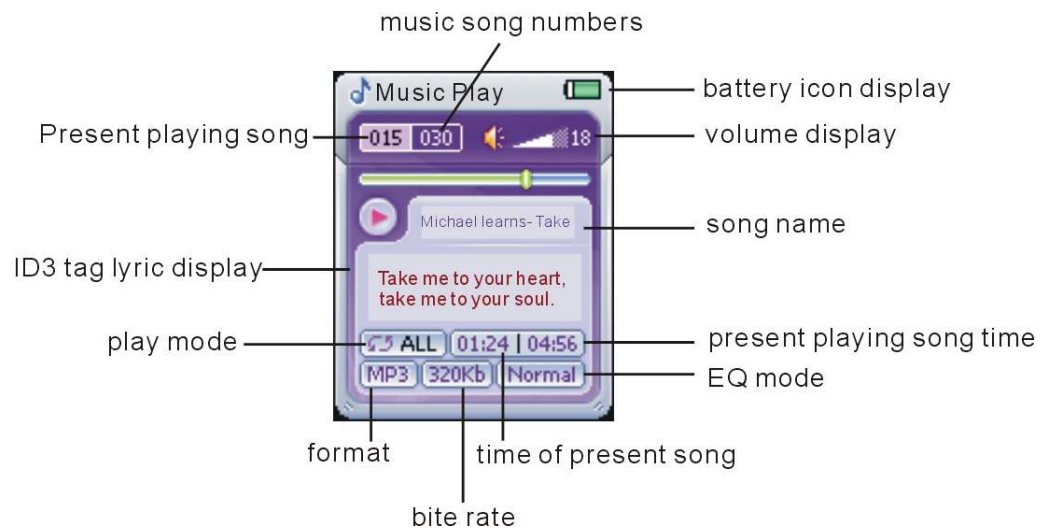
## Notice

1. Do not throw into fire to avoid danger of explosion.
2. Do not immerse into water or get soaked since the battery charging function will be lost.
3. Do not charge rechargeable battery longer than specified to prevent danger of fire.
4. Do not take the batteries apart.
5. Overcharging & over-discharging rechargeable batteries may shorten their life span.
6. To prolong the life of a rechargeable battery, completely discharge it before fully charging it again.
7. recharge battery with below status:
  - A. battery icon display 
  - B. System auto off.
  - C. Operation key not working

8. The "copying Files" windows appears on your PC please don't Remove USB from computer.
9. Do not unplug the USB cable during file downloading, it may cause malfunction to your PC and player.
10. Do not plug in an earphone or audio cable during file downloading.
11. Downloading can be delayed if there are too many folders or files.
12. The order of music files displayed on the Windows Explorer is not the order of actual music playback.
13. When it is connect with PC, the player start charging.
14. Do not open the player; any questions just contact your retailer.

## Part name:

Display



## Key function details

1. **▶||** on/off /play/pause

First put the ON/OFF button at the top of the device on "ON" position.

**Under off mode, press this key to switch on the player.**

Under on mode, long press this key to shut down player.

Under MP3/voice stop mode, short press this key to start play, short press this key again for pause.

Under voice recording pause mode, short press this key to start record, short press this key again for pause record.

Under voice recording mode, long press this key to stop record and save recorded file.

Notice: this player has auto save power function. Under stop mode, without any operation during set time, it will automatically shut down.

## 2. REC KEY/A-B key

Under play mode, long press this key to enter record mode, short press to enter A-B repeat mode

## 3. MENU key

Press MENU button to enter the main menu (stop mode: long press to enter), short press to see the sub-folders (short press to enter).

Under MP3/voice play and stop **mode**, short press this key to enter sub-folder, long press this key to enter main menu

Under voice recording mode, long press this key to stop record and save the recorded file.

## 4. Next song/forward

Under pause or stop mode, long press this key to go forward.

Under play mode, long press this key to increase volume, short press to go next track.

Under menu mode, press this key to select the icon or sub-folder.

## 5. previous/backward

Under pause or stop mode, long press this key to go backward.

Under play mode, long press this key to lower volume, short press to previous track.

Under menu mode, press this key to select the icon or sub-folder.

## 6. Power ON/OFF

Press this key to ON position, then the player can be switched on.

Press this key to OFF position, then the player is switched off. Press this key to shut down when don't use.

## 7. Earphone jack





To connect earphone.

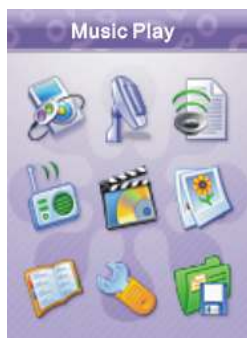
## 8. USB port

To connect with PC and transfer data.

# Manual function details

## 1. Music play

Long press MENU key to enter main menu, then press  or  key to choose music playing, **press  to enter**, then press  to start playing music.



Main menu mode



music mode

Under music play mode, short press MENU key to enter sub-folder menu, then press ►► / ◀◀ key to choose previous and next operation function. Press ►► to enter:

1. File list: press ►►/■ key to enter this option, under this directory, list all music, press ►► / ◀◀ to choose music, press ►► again to confirm and play music.
2. EQ setting: press ►► key to enter this option, (under this directory, with below option: normal, rock, classical, pop, jazz), press ►► / ◀◀ to select, after press ►► key to confirm, then listen your music in different EQ mode.
3. Play mode: press ►► key to enter this option, it with: normal, repeat one, repeat all, intro, intro all mode, press ►► / ◀◀ to confirm choice, press ►► key to confirm.
4. delete file: press ►► key to enter this option, press ►► / ◀◀ to select the music file to delete, press MENU key again(deleted) to choose “YES” or “NO”, when select “YES”, press ►► key to delete, and “delete success” displayed. Press REC key to exit.
5. Return: choose Return, then press ►► to confirm and enter the music mode.

### lyric display

The player supports “.lrc” format lyric file, and display it at the same time as the music file. But the file should be in the same name as the music file, then lyrics can be display while playing.

## 2. record

Long press MENU key to enter main manual, then press ►► or ◀◀ to select record, press MENU to confirm, and then start recording.

Under recording mode, short press MENU key to stop record and save the recorded file.

## 3. voice play

Long press MENU to enter main manual, then press ►► or ◀◀ to choose voice, press ►► key to confirm, then press ►► to start recording.

Under voice mode: press MENU key to select play list, play mode, delete voice file or exit.

File list: press ►► key to enter this option, under this directory, you will have the list of all recorded voice file, press ►► / ◀◀ to choose, and press ►► o confirm and listening the voice file.

Play mode: press ►► key to enter sub-manual, press ►► / ◀◀ to select, press MENU key again to choose: normal, repeat one, repeat all, intro, intro all function, press ►► key to confirm,

Deleted file: press ►► key to enter this option, press ►► / ◀◀ to select the file you want

to delete, press MENU key again to choose “YES” or “NO”, when select “YES”, press ►|| key to confirm delete, press REC key to exit.

Return: choose Return, then press ►|| to confirm and enter the voice mode.

## 4. FM radio

Long press MENU key to enter the main manual, then press ►|| or ◀◀ to select FM radio, press ►|| key to confirm and enter, and then the player starts to receive tuner.



Receiving FM radio mode:

Under receiving mode, press MENU key to select receiving, scan, save station, record or exit function. Press ►|| key to operate.

- 1.Receiving: press MENU key to enter this option, then press ►|| / ◀◀ again to choose station.
- 2.Scan radio station: press MENU to enter this option, then press ►|| to start auto scan, short press ►|| / ◀◀ is manual scan, long press for auto scan.
- 3.Save station: press MENU key to enter this option, then press ►|| key until it is displayed “succeed”
- 4.Record: when receiving radio, press MENU key to enter this option, press ►|| then save present receiving station in record (delete “the”) file, short press MENU to exit record.
- 5.Exit: press MENU key to enter this option, press MENU key to exist receiving radio mode.
- 6.Record play: long press MENU to enter submenu VOICE, and then select the recorded file to play.

## 5. video play

Long press MENU key to enter the main menu, then press ►|| or ◀◀ key to select video, press ►|| key to confirm and enter, then press ►|| to start watching, and press ►|| again to pause.

Long press ◀◀ key to go to the previous file.

Long press ►|| key to go to the next file.

In play mode, press MENU key to access the below functions:

- ① File list: press ►|| to enter this option, under this directory, list all MTV, press ►|| / ◀◀ key to choose, press ►|| again to confirm and start watch.
- ② Delete file: press ►|| key to enter this option, then press ►|| / ◀◀ key to select the file you want to delete, press MENU key(delete “again”) to choose “YES” or “NO”, when choose “YES”, press ►|| key to confirm, press REC key to exit.
- ③ Return: choose Return, then press ►|| to confirm and enter the video mode.

※ play video file needed to use SIGMSTEL MOTION VIDEO software to change it as SMV format file, please refer to “change video file to SMV” part of this manual.

Create a folder named “Mvideo” on your player. Then copy the converted files in this folder.

You can watch your movie.

## 6. Picture Scan

Long press MENU to enter the main menu, then press **▶▶** or **◀◀** to select PICTURE SCAN, **press ▶▶ to confirm**; press **▶▶ / ◀◀** to choose MANUAL SCAN. AUTO SCAN.RETURN.

MANUAL SCAN: press MENU to enter the submenu, press **▶▶ / ◀◀** to choose this function; **press ▶▶ to confirm**, press **▶▶ / ◀◀** to watch the pictures one by one

AUTO SCAN: press MENU to enter the submenu, press **▶▶ / ◀◀** to choose this function; **press ▶▶ to confirm**.

**Return: choose Return, then press ▶▶ to confirm and enter the main menu**

※ Create a folder named “PHOTO” on your player. Then copy the pictures in this folder.

**Caution: only the pictures in the file named “PHOTO” can be displayed.**

## 7. E-BOOK

Long press MENU to enter the main menu, press **▶▶** or **◀◀** and choose E-book, **press ▶▶ to confirm**; press **▶▶ / ◀◀** to read.

① FILE LIST: **press ▶▶ to enter the function**, all the books recorded are displayed. Press **▶▶ / ◀◀** to choose, then press **▶▶** to confirm

② DELETE: **press ▶▶ to get in**, press **▶▶ / ◀◀** to choose the target file; then press MENU(delete “again”), choose “YES” or “NO”; **when choose “YES”, press ▶▶ to confirm**, press REC to confirm

③ **Return: choose Return, then press ▶▶ to confirm and enter the main menu**

Notice: create a E-book file, creat a “.TXT” file in your computer and then copy to your player.

**NOTE: The E-BOOK file should be in .TXT format.**

**After you download the E-book(.TXT) file, but haven't review it, you may delete the file**

**directly as per the above operation. If you have reviewed the file, and then want to delete it, please power off the player and restart it, then enter the menu, to delete the file as per the above operation.**

## 8. System Setting

Long press MENU to enter the main menu, then press **▶▶** or **◀◀** to choose SETTING, **press ▶▶ to press ▶▶ / ◀◀** to select LANGUAGE/ OFF TIME/ SAVE MODE/ LCD CONTRAST/EXIT.

LANGUAGE: press **▶▶** or **◀◀** to enter submenu, press **▶▶ / ◀◀** to choose this function; **press ▶▶ to confirm**, press **▶▶ / ◀◀** to select the language you want, and then **press ▶▶ to confirm**

OFF TIME: **press ▶▶ to enter the submenu**, press **▶▶ / ◀◀** to choose this function; **press ▶▶ to confirm**, press **▶▶ / ◀◀** to choose if it should be deactivated, 2 minutes. 5 minutes. 10 minutes, then **press ▶▶ to confirm**.

SAVE MODE: **press ▶▶ to enter the submenu**, press **▶▶ / ◀◀** to choose this function, **press ▶▶ to confirm**, press **▶▶ / ◀◀** to choose 5 seconds. 20 seconds. 30 seconds. 60

seconds by pressing ►|| key to confirm

RECORD: press ►|| to enter the submenu, press ► / ◀ to choose this function; press MENU to confirm, press ► / ◀ to choose VOICE SOURCES. CODING. SAMPLING. TRACK. BACK, then press MENU to operate the change.

LCD CONTRAST: press ►|| to enter the submenu, press ► / ◀ to choose this function; press ►|| to confirm, press ► / ◀ to rectify the contrast

Return: choose Return, then press ►|| to confirm and enter the main menu

## 9. Product Information

Long press MENU to enter the main menu, then press ► or ◀ to choose ABOUT, press ►|| to enter in , then the software information\ capability inside and capability in balance are displayed.

## 10. Repeat A-B

Under play mode, short press REC/A-B button to enter A-B repeat mode. A appears in the play mode window of the screen. Short press again to mark the end of the part to repeat. You can then listen the part of the track you select. Press again on the REC/A-B button to go back to normal play mode.

## Charging

This player has rechargeable lithium battery by “USB” cable, when the player is on charge, put the on-off switch in “on” position first. When the charging time goes on, a built-in battery sign will add grid, showing the quantity of the power. The time might be about 3-4 hours for a full recharge. When you are not using the player, please power off.

Note: Please refer to the battery indicator to see if the battery is full and disconnect the player.

## USB Connection

1. use the USB cable to connect player with the computer
2. when establish the connection ,the player will display below:

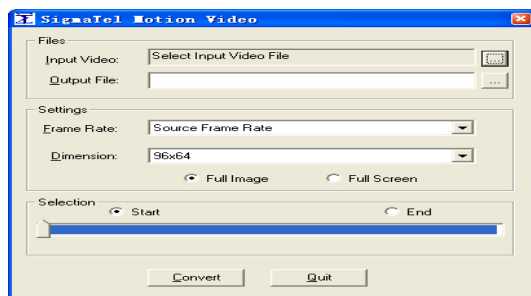


3. Under WIN98 system, please install the software provided on the CD on the PC, then connect the equipment; For above systems, insert the USB cable directly the device will be automatically erected.

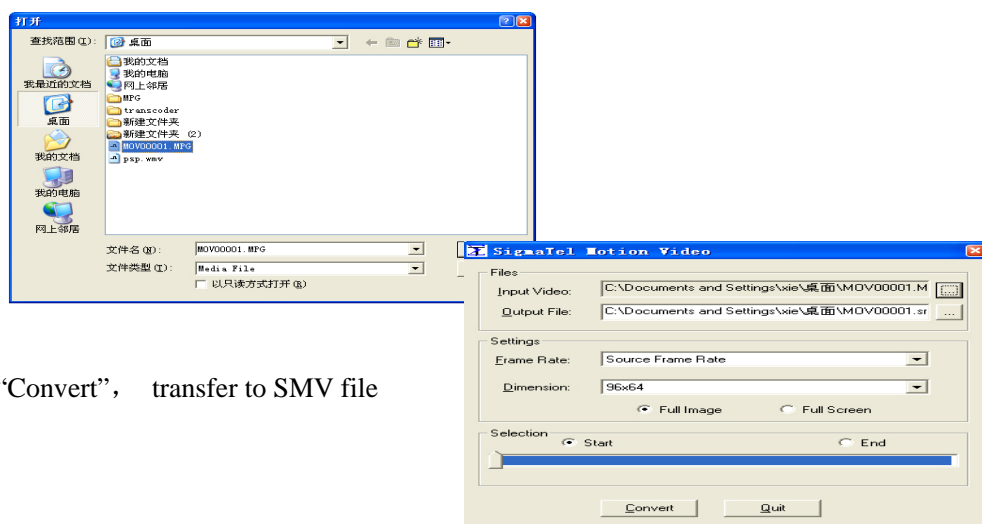
## Convert the video file to SMV file

For playing the video files via Video2smv software provided, please follow the steps as below:

- 1、 run “Video2smv.exe” program, then below picture comes out



2. choose the video file you want to convert.



3. select “Convert”, transfer to SMV file

## FILE TRANSFER & FORMATTING

Once setting the MP3 driver correctly (under WIN98 only), please connect your MP3 player with the computer, MP3 player would be detected as a removal disk, uploading and downloading normally.

### SPECIAL STATEMENT:

- ⊙ While uploading and downloading, don't disconnect USB cable from the computer, the software would be broken or it would lead to malfunction.
- ⊙ when you want to disconnect the cable, please make sure that the note on LCD display is holding still.
- ⊙ on Windows ME. Windows 2000 and Windows XP operation system, please follow the procedure when disconnecting the USB cable, it may cause data loss or malfunction.

Before formatting, please connect the player on the computer, and turn on the player.

On Windows98 operation system, please choose the “FAT” from the “file system” in the formatting dialog box coming out, and then format the player.

## Trouble Shooting

1. when I press on “play”, No display?

**Cause/ Solution:** Please connect the player on the computer for recharging. Try to restart it 10 minutes later.

**2. When I want to play files, no sound?**

**Cause/ Solution:** volume is too low, turn up the volume, inspect the connection of the earphone or if it is broken.

**3. Why does my computer go wrong when I disconnect the player?**

**Cause/ Solution:** mostly because of taking off the player when it is transferring file, We advise you not to disconnect the player while transferring.

**4. Why can't I download files while MP3 player is connected to the PC?**

**Cause/ Solution:** the USB Driver hasn't been installed correctly, Please install the USB driver again follow the operation instruction, or your computer's motherboard does not support USB equipment, you need update your motherboard driver.